

1st July 2015

**Offshore Shellfish Ltd – expansion of Lyme Bay offshore mussel farming sites**

Offshore Shellfish is commencing the permitted expansion of Site 2 of the offshore mussel farm in Lyme Bay, week commencing 6<sup>th</sup> July. In advance of this, 6 yellow Special Mark buoys will be deployed to delineate the site boundaries. The coordinates of the buoys are given below, together with a map of the site. A scale diagram showing what is to be built within the site this year is also given.

This deployment is in accordance with the conditions of the company’s Marine Licence and Crown Estate lease.

The existing Special Marks have been in place since September 2013 at the following positions and mark the current limits of Site 2.

All coordinates in Degrees and Decimal Minutes

**Existing coordinates of Site 2:**

WGS84 Latitude	WGS84 Longitude
50° 38.983'N	3° 11.692'W
50° 39.085'N	3° 11.031'W
50° 39.058'N	3° 11.023'W
50° 39.010'N	3° 11.700'W

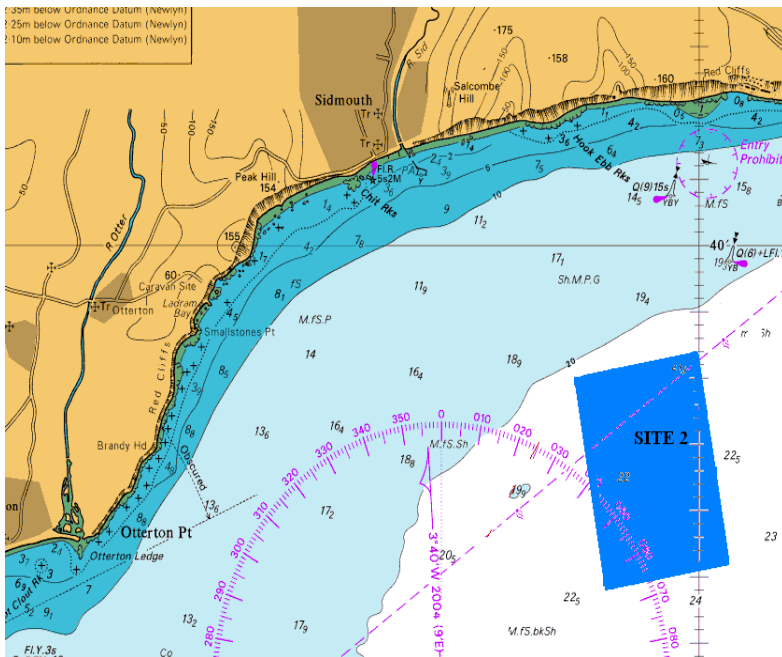
The new limits of Site 2 will be delineated at each corner by yellow Special Marks with a St Andrew’s cross-shaped top mark and a yellow light flashing every 5 seconds (FL.Y.5s). The buoys at the two coordinates marked by asterisk (\*\*) below, lie at the half-way points on the N-S axes of the site and are not lit. All of the buoys are equipped with internal radar reflectors and the arrangements and specification of the marks are in accordance with instructions from Trinity House.

All of the buoys are due to be installed on Thursday 2<sup>nd</sup> July at the following positions and notices to mariners will be issued.

**New Coordinates of Special Marks delineating Site 2:**

WGS84 Latitude	WGS84 Longitude
50°39.200'N	3°10.028'W
50°38.398'N **	3°09.815'W **
50°37.600'N	3°09.600'W
50°37.405'N	3°11.281'W
50°38.203'N **	3°11.496'W **
50° 39.010'N	3° 11.700'W

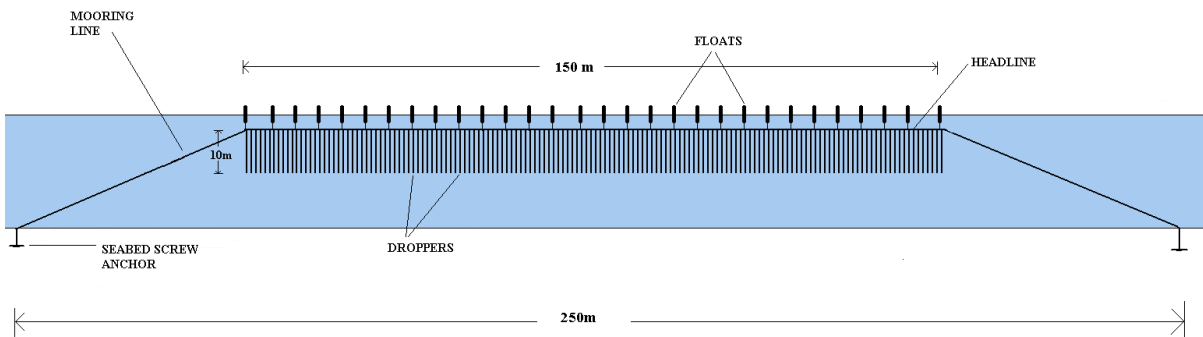
## MAP OF SITE 2



## Sectional view of a single longline within Site 2

Please note that over the summer weeks, we will be installing 50 new lines throughout Site 2, in addition to the 4 existing lines.

Sectional View of Single Longline



Please contact Nicki Holmyard on 07711 272637 or [nicki@offshoreshellfish.com](mailto:nicki@offshoreshellfish.com) if you have any queries.